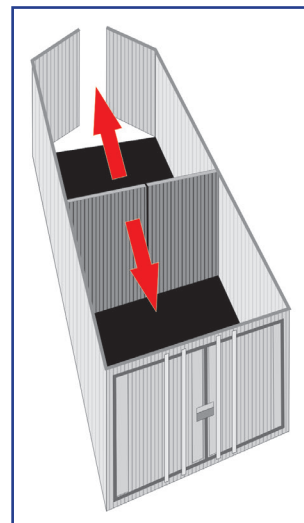
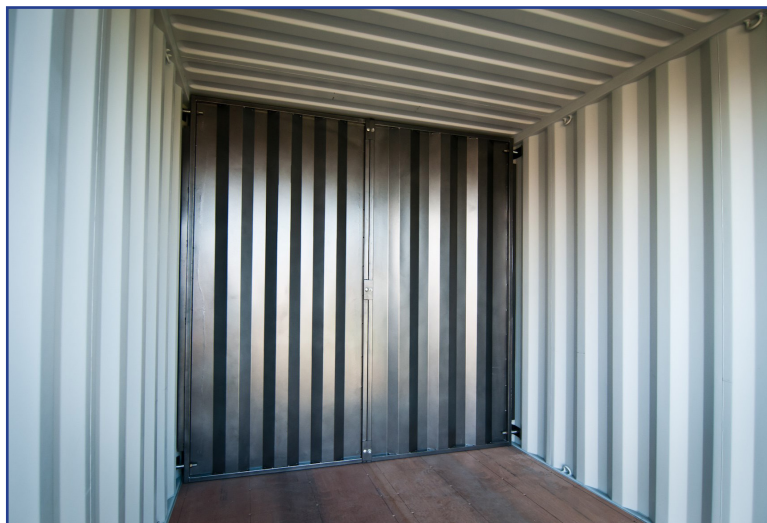


## #6020 INSTA DIVIDER WALL



### #6020 INSTA DIVIDER WALL DESCRIPTION:

The INSTA Divider Wall can be installed and removed in under 20 minutes as the product requires NO welding. Convert any container into two separate storage spaces that are completely secure from each other. Each panel is made of corrugated steel for added strength and bolt together on both sides for the ultimate security. The product is powder coated dark grey so it looks great inside the container. This INSTA shipping container divider wall was a huge hit when it was introduced in 2014 at the NPSA (National Portable Storage Association) show in Las Vegas and won the “best product in show” award. Extension plate available for high-cube containers.



### SPECS

- 16 gauge steel construction / 1.3mm
- 90" H x 44" W / 2.29m x 1.12m
- 130 lbs. / 54.43 kg per section



### FEATURES

- Corrugated steel
- Four (4) pressure fitted feet to fit into container wall corrugations
- No welding required
- Leaves no trace behind when uninstalled



### ACCESSORIES

- #6024 INSTA High-Cube Enclosure Panels
- #6019 INSTA Divider Wall 93" height



INSTA Container Modifications is a proud charter member of the National Portable Storage Association (NPSA).

**WARNING** - All products that require installation or fabrication should never be done until you have the product in hand to take exact measurements. While every attempt is made to make sure product specifications are accurate, there is the possibility the products have been updated or a small variance between production made the measurement off. Installation of products may require some fabrication experience, and in no way does warranty cover installation mistakes.