



instant.strong.secure.

thinking inside and outside the box

3'X4' INSTA EURO WINDOW (#6010)

Handle Installation Guide

ADDAWINDOW!

Our INSTA Euro Window is tough and stylish. Built with heavy-duty one piece integrated steel frame construction, this window looks as good as it is strong.

- Unique 2-way opening
- 9 gauge steel frame
- Frame: 3' H x 4' W / 0.91m x 1.22m
- Superior quality dual pane aluminum insert window
- 105 lbs / 47.6 kg
- Locking bug screen
- Designed for bolt-on or weld-on application
- Drip plate included

3'X4' INSTA EURO WINDOW HANDLE

www.instacm.com

1.866.647.4353



INSTA Container Modifications is a proud charter member of the National Portable Storage Association (NPSA)



Tools Required For Installation

Before you start, retrieve the supplied box of hardware and ensure its contents match the image as shown.



1

IMPORTANT:

To begin, rotate handle to the horizontal position. It should remain in this position until the installation is complete.

1. Remove the black plastic gasket and 2-pronged locking tab.
2. Re-install the 2-pronged locking tab so it is in the center of the gear mechanism. This will be the mid-point of the mounting face. Re-install the black plastic gasket.



2

1. Grasp the handle and insert the 2-pronged locking tab into the window slot. Using gentle but firm pressure, push down on the handle assembly (as shown by the arrow) until you feel the locking mechanism inside the window move downward one position. (This will allow you to open the window from its locked position.)
2. If the window does not open to the side but does open at the top, you have gone one position too far. Simply slide the handle mechanism up one position and the window will open to the side.



instant.strong.secure.

thinking inside and outside the box

ADDA WINDOW!

Our INSTA Euro Window is tough and stylish. Built with heavy-duty one piece integrated steel frame construction, this window looks as good as it is strong.

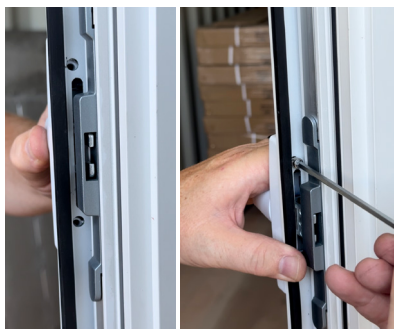
3'X4' INSTA EURO WINDOW HANDLE

www.instacm.com

1.866.647.4353



INSTA Container Modifications is a proud charter member of the National Portable Storage Association (NPSA)



3

1. With the window open, line up the threaded holes in the handle with the matching holes in the window frame.
2. Using the 2 screws and allen wrench provided, attach the window handle to the window frame. Ensure not to overtighten the screws.



4

1. With the handle remaining in the horizontal position, close the window and move the handle counterclockwise so it is pointing down. The window will now be locked.



5

1. To open the window, move the handle in the clockwise direction $\frac{1}{4}$ turn to open the window sideways and clockwise a full $\frac{1}{2}$ turn to open the window at the top as shown in images.
2. Reverse this procedure to close and lock the window.



WARNING - All products that require installation or fabrication should never be done until you have the product in hand to take exact measurements. While every attempt is made to make sure product specifications are accurate, there is the possibility the products have been updated or a small variance between production made the measurement off from what's in this book. Installation of products may require some fabrication experience, and in no way does warranty cover installation mistakes.